

Your Fees at Work

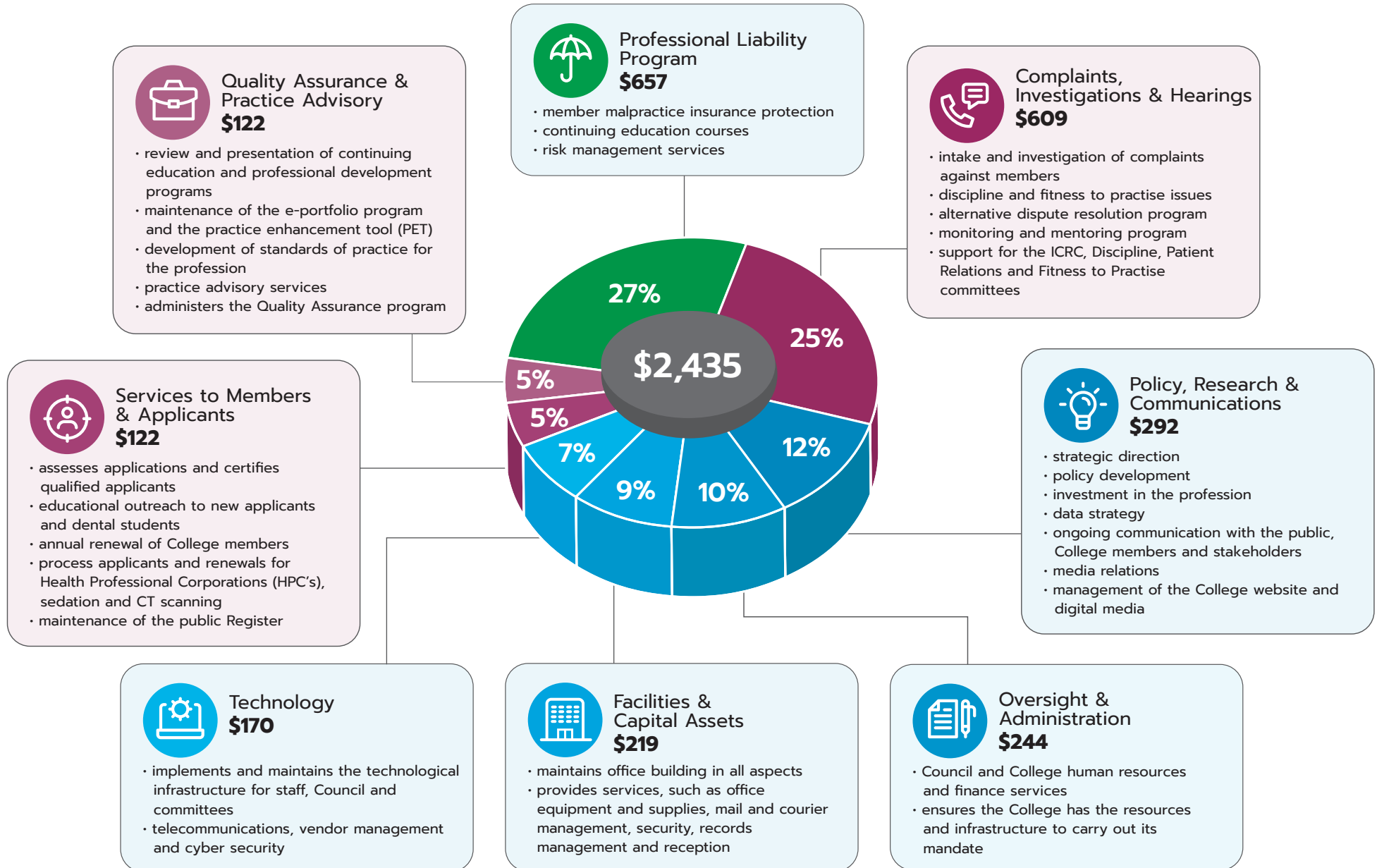
- PLP
- Regulatory Work
- Administrative Support to accomplish regulatory pieces



Royal College of
Dental Surgeons of Ontario

How your fees fund College activities

(Based on 2020 annual fee of \$2,435)



Quality Assurance & Practice Advisory \$122

- review and presentation of continuing education and professional development programs
- maintenance of the e-portfolio program and the practice enhancement tool (PET)
- development of standards of practice for the profession
- practice advisory services
- administers the Quality Assurance program



Professional Liability Program \$657

- member malpractice insurance protection
- continuing education courses
- risk management services



Complaints, Investigations & Hearings \$609

- intake and investigation of complaints against members
- discipline and fitness to practise issues
- alternative dispute resolution program
- monitoring and mentoring program
- support for the ICRC, Discipline, Patient Relations and Fitness to Practise committees



Services to Members & Applicants \$122

- assesses applications and certifies qualified applicants
- educational outreach to new applicants and dental students
- annual renewal of College members
- process applicants and renewals for Health Professional Corporations (HPC's), sedation and CT scanning
- maintenance of the public Register



Policy, Research & Communications \$292

- strategic direction
- policy development
- investment in the profession
- data strategy
- ongoing communication with the public, College members and stakeholders
- media relations
- management of the College website and digital media



Technology \$170

- implements and maintains the technological infrastructure for staff, Council and committees
- telecommunications, vendor management and cyber security



Facilities & Capital Assets \$219

- maintains office building in all aspects
- provides services, such as office equipment and supplies, mail and courier management, security, records management and reception



Oversight & Administration \$244

- Council and College human resources and finance services
- ensures the College has the resources and infrastructure to carry out its mandate